

# VENUE SPECS

# VILCO

a spaces location 

DIE ZUKUNFT  
IST JETZT!

DIE ZUKUNFT  
IST JETZT!

## DELIVERY:

Niddastraße 3, 61118 Bad Vilbel

## VISITOR ADDRESS:

Gunther-Biwer-Platz 1, 61118 Bad Vilbel

# SATIS&FY

# CONTENTS

## Event Profile – 3



## ROOM 1 / Grosser Saal – 4-14



## ROOM 2 / Kuhrhaus – 15-16



## Room 3 / Garten Saal – 17-18



## IT Infrastructure & Delivery – 19-20



# VENUE SPECS. EVENT PROFILE

## CONCERTS

U&E, Classical, Rock / Pop

## CULTURE

Theater, ballet, musicals, readings, comedy

## TV PRODUCTIONS

## GALA & BANQUET

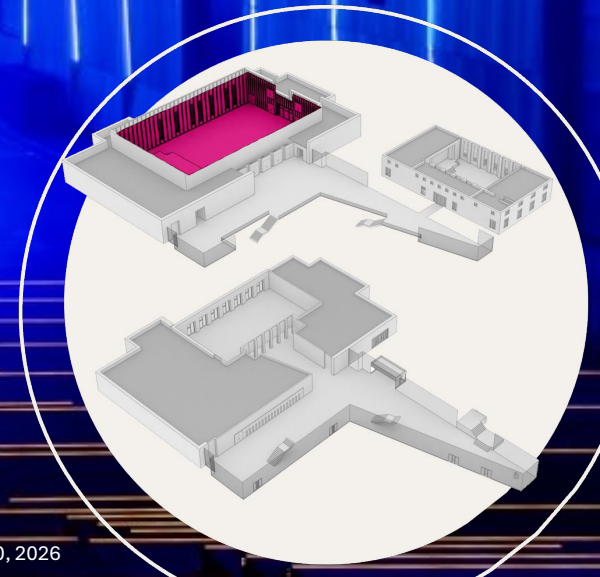
## CONFERENCES & CORPORATE



# VENUE SPECS. GROSSER SAAL.

## ROOM 1 / GROSSER SAAL

Size	1.220 m <sup>2</sup>
Height	10 m
Row	1.250
Parliament	704
Banquet	624
Reception	2.000



# VENUE SPECS. GROSSER SAAL.



## STAGE

- The stage has the following dimensions: maximum width 20 m, depth 9.8 m, plus a 14 m wide, 2 m deep proscenium
- The height and lifting range are as follows: From the auditorium level up to 1.6 m. Standard height is 1.05 m. Can be adjusted freely in height and stepped for an orchestra.
- Load capacity: 500 kg/m<sup>2</sup>
- Flooring: Dark parquet in the auditorium and on the stage
- Center and side wings are possible via movable walls
- Main curtain is on a motorized curtain track



## LIGHT

- 8 Prolight ECL LED profiles, 12 Prolight LED ECL Fresnel 250W, 4 Prolight LED Fresnel 500W
- Stage and Auditorium Effect Lighting: 24 Martin MAC AURA wash, 20 Martin MAC Encore Performance CLD Spot
- Floor Set: 6x Martin MAC Aura fixtures and 8x Martin MAC Encore Performance CLD spots. The side walls have LED RGBW strips
- Follow spots: Two Robert Juliat Dalis 860 fixtures in the control booth, including an intercom
- Lighting console: GRAND MA 3 Light with MA2 network configuration



## RIGGING

- There are 11 fly lines and 14-meter-long poles with 48-mm tubing that can be used with restrictions. Ceiling panels that partially block the fly lines must be removed upon consultation. The distributed load per fly line is 500 kg
- There are sufficient rigging points above the stage and in the auditorium. See the rigging plan for details. The load capacity is up to 500 kg per rigging point. The clear height on stage is 9 m
- A catwalk is available



## AUDIO

- Sound system: L-Acoustics L2/L2d
- Subwoofers: Eight L-Acoustics KS28s and four KS21s
- Additional speakers, e.g., monitors/near-field speakers
- L-Acoustics X8s, X12s, and A10 Wides
- Mixing consoles: Yamaha CL5, CL3, and QL1
- Dante network (Dante and AVB)
- Various microphones (e.g., 12 ULXD)
- Reverb system with 60 Audio-Technica units installed

# VENUE SPECS. GROSSER SAAL.



## ELECTRICITY

- Stage: 4x Schuko, 2x CEE 16A, 4x CEE 32A, 2x CEE 63A, 1x CEE 125A, Floor boxes on the stage with various Schuko outlets
- Auditorium wall outlets: Various Schuko outlets, six CEE 16A outlets, four CEE 32A outlets, and two CEE 63A outlets.



## ARTISTS' DRESSING ROOMS

- 4x single dressing rooms, 2x group dressing rooms. Each room has furniture, mirrors, a refrigerator, showers, and toilets
- Wi-Fi and LAN in all rooms
- Public address system



## VIDEO

- Roll-up screen in front of the stage back wall (14 m wide, variable height)
- Projector: 43,000 ANSI lumens (Panasonic)
- Small control room



## ROOM SETUP & SEATING

- Sufficient quantities of chairs, tables, and bar stools are available for concerts/row seating
- Digital seat numbering is available
- There are fixed control room positions for sound and lighting control
- A freight elevator provides direct access to the main hall.

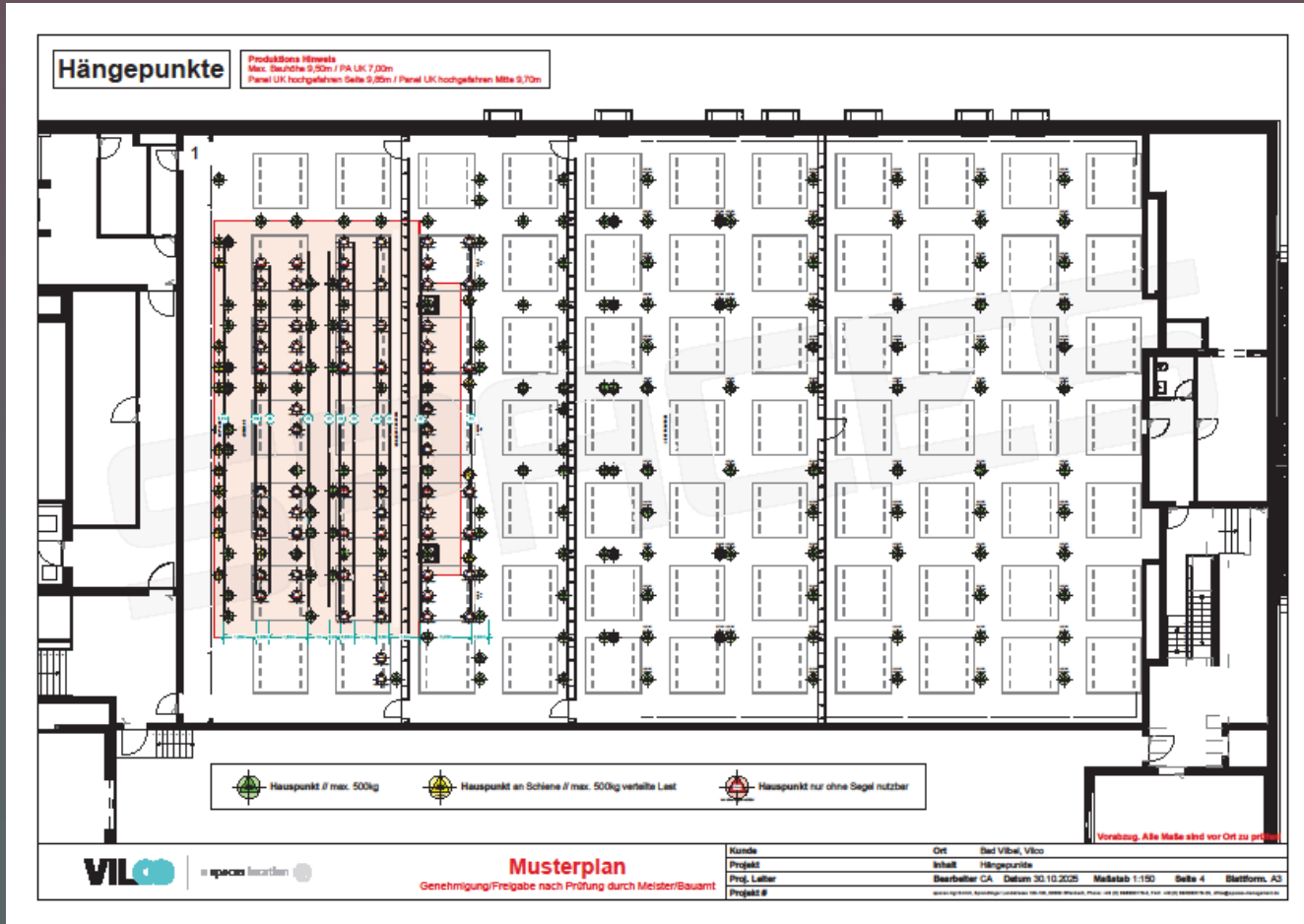


## MERCHANDISE

- Tables are available for display: 40 bar tables and 250 conference tables (with or without tabletops)
- Mobile coat racks can be used for merchandise display.

# VENUE SPECS. GROSSER SAAL. TECHNICAL PLANS

## LIFTING POINTS

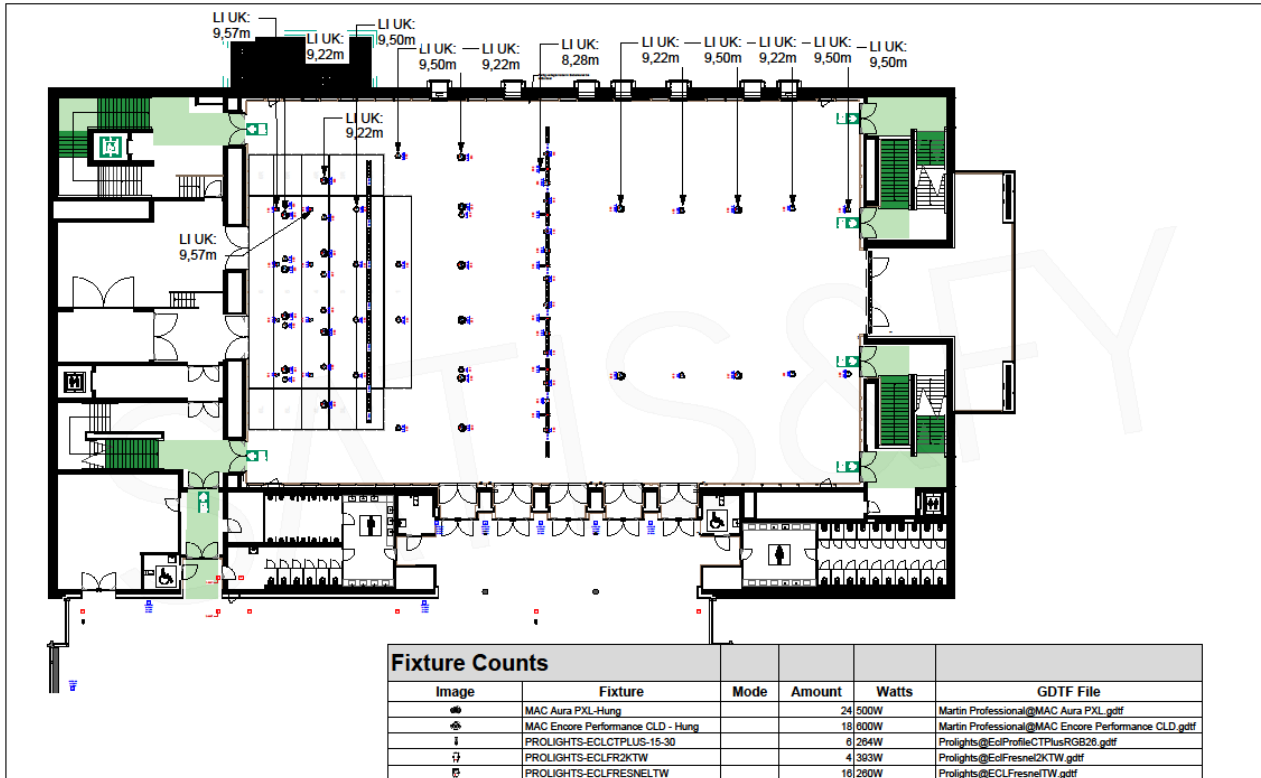


DOWNLOAD

# VENUE SPECS. GROSSER SAAL. TECHNICAL PLANS

## LIGHTING PLAN

## LIGHT PATCH



Exported Data file:///D:/gma2/fixture\_layers/VILCO%20PATCH\_1.htm



Show: vilco clean bobcast Export Date: 2024-05-27T14:46:07

Layer	Fix ID	Ch ID	Name	Fixture Type	Patch	Color
ECL Plus	301		ECL CT+ 1	10 ECL Profile CT+ Standard RGB (10)	5.109	ffffff
ECL Plus	302		ECL CT+ 2	10 ECL Profile CT+ Standard RGB (10)	5.118	ffffff
ECL Plus	303		ECL CT+ 3	10 ECL Profile CT+ Standard RGB (10)	5.127	ffffff
ECL Plus	304		ECL CT+ 4	10 ECL Profile CT+ Standard RGB (10)	5.136	ffffff
ECL Plus	305		ECL CT+ 5	10 ECL Profile CT+ Standard RGB (10)	5.145	ffffff
ECL Plus	308		ECL CT+ 8	10 ECL Profile CT+ Standard RGB (10)	5.154	ffffff
EclFresnel 2KTW	204		EclFresnel 2KTW 7	5 EclFresnel2KTW 9 channel (5)	5.100	ffffff
EclFresnel 2KTW	203		EclFresnel 2KTW 8	5 EclFresnel2KTW 9 channel (5)	5.091	ffffff
EclFresnel 2KTW	202		EclFresnel 2KTW 9	5 EclFresnel2KTW 9 channel (5)	5.082	ffffff
EclFresnel 2KTW	201		EclFresnel 2KTW 10	5 EclFresnel2KTW 9 channel (5)	5.073	ffffff
EclFresnel TW	116		EclFresnel TW 1	6 Eclipse Fresnel TW 9 channel (6)	5.064	ffffff
EclFresnel TW	115		EclFresnel TW 2	6 Eclipse Fresnel TW 9 channel (6)	5.055	ffffff
EclFresnel TW	114		EclFresnel TW 3	6 Eclipse Fresnel TW 9 channel (6)	5.046	ffffff
EclFresnel TW	113		EclFresnel TW 4	6 Eclipse Fresnel TW 9 channel (6)	5.037	ffffff
EclFresnel TW	112		EclFresnel TW 5	6 Eclipse Fresnel TW 9 channel (6)	5.028	ffffff
EclFresnel TW	111		EclFresnel TW 6	6 Eclipse Fresnel TW 9 channel (6)	5.019	ffffff
EclFresnel TW	110		EclFresnel TW 7	6 Eclipse Fresnel TW 9 channel (6)	5.010	ffffff
EclFresnel TW	109		EclFresnel TW 8	6 Eclipse Fresnel TW 9 channel (6)	5.001	ffffff
EclFresnel TW	108		EclFresnel TW 9	6 Eclipse Fresnel TW 9 channel (6)	2.028	ffffff
EclFresnel TW	107		EclFresnel TW 10	6 Eclipse Fresnel TW 9 channel (6)	2.019	ffffff
EclFresnel TW	106		EclFresnel TW 11	6 Eclipse Fresnel TW 9 channel (6)	2.010	ffffff
EclFresnel TW	105		EclFresnel TW 12	6 Eclipse Fresnel TW 9 channel (6)	2.001	ffffff

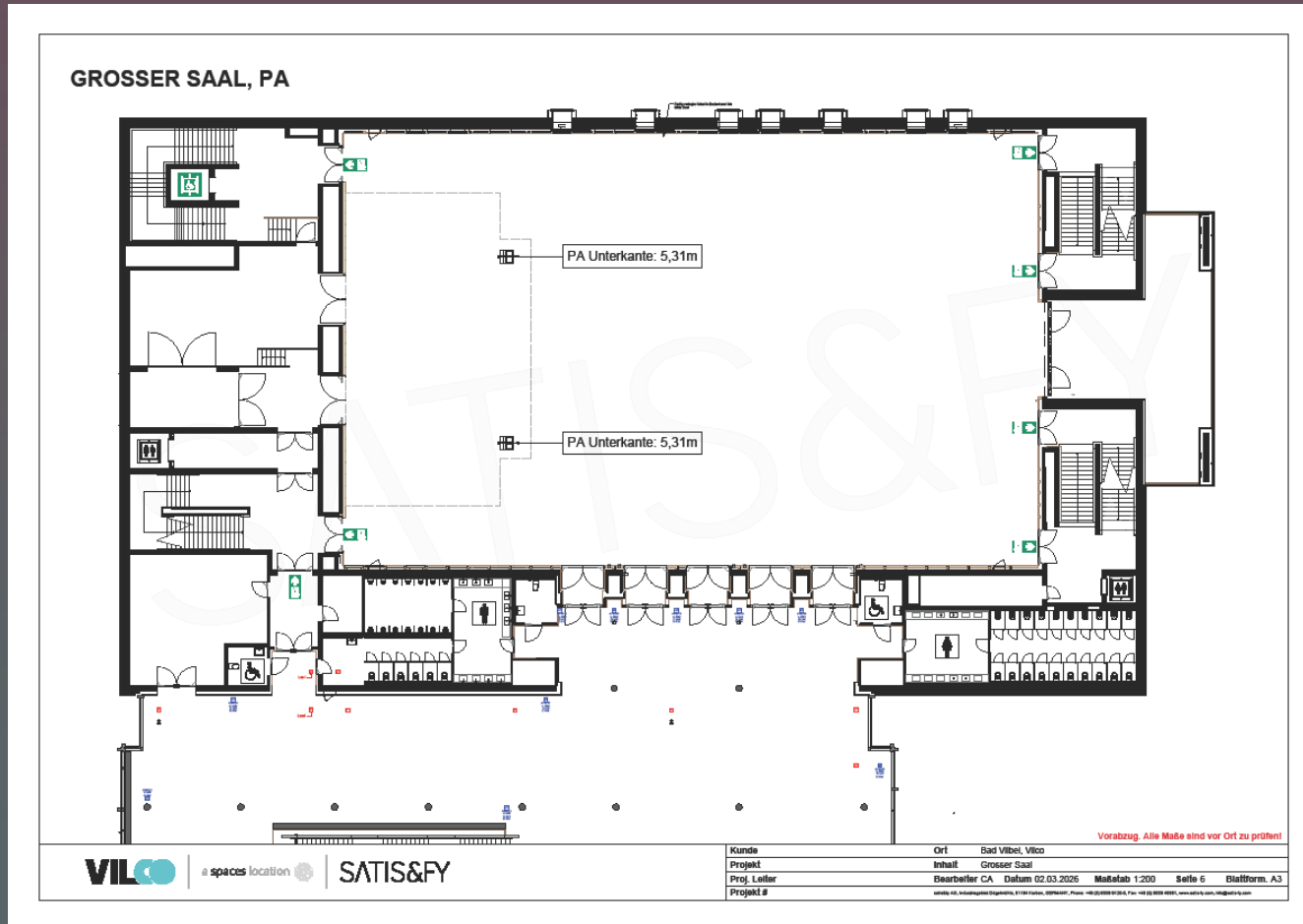
Vorabzug. Alle Maße sind vor Ort zu prüfen!

DOWNLOAD

DOWNLOAD

# VENUE SPECS. GROSSER SAAL. TECHNICAL PLANS

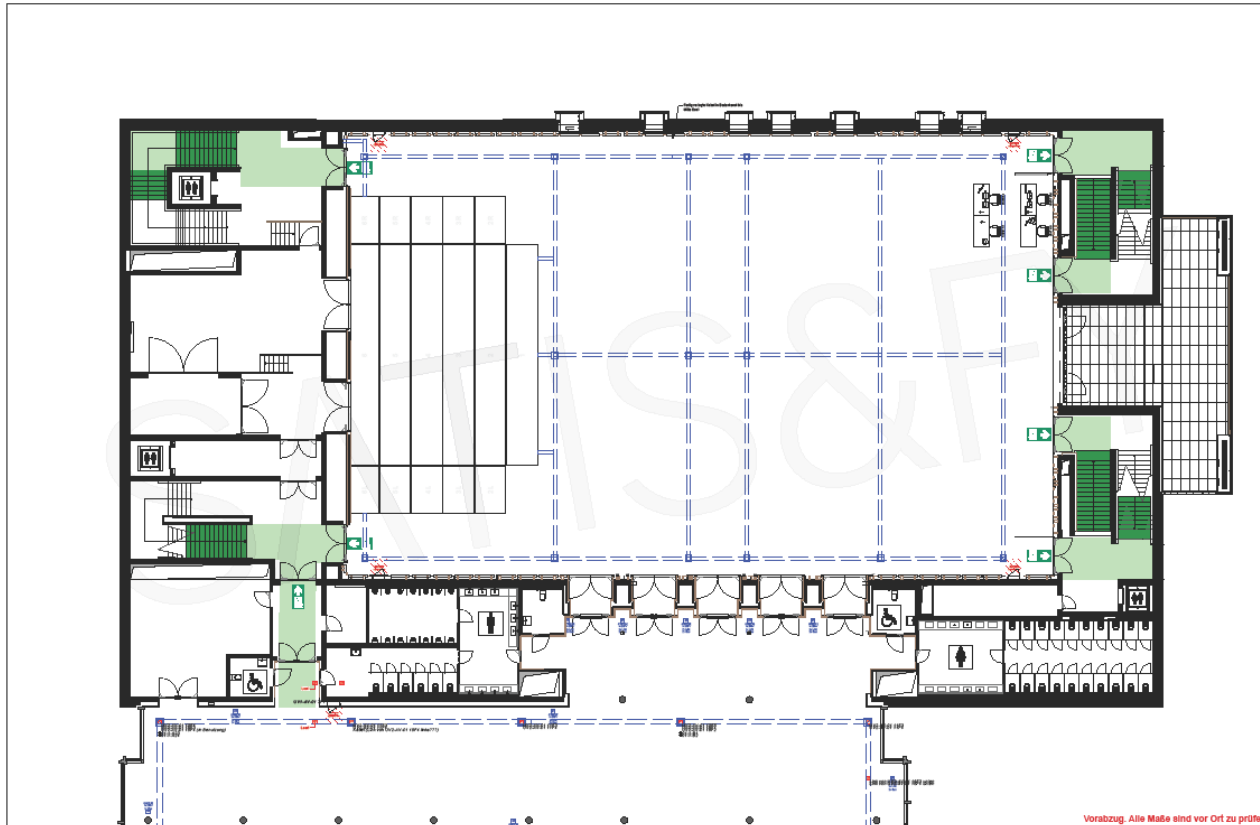
## PA POSITIONS



DOWNLOAD

# VENUE SPECS. GROSSER SAAL. TECHNICAL PLANS

## FOH-VARIATIONS

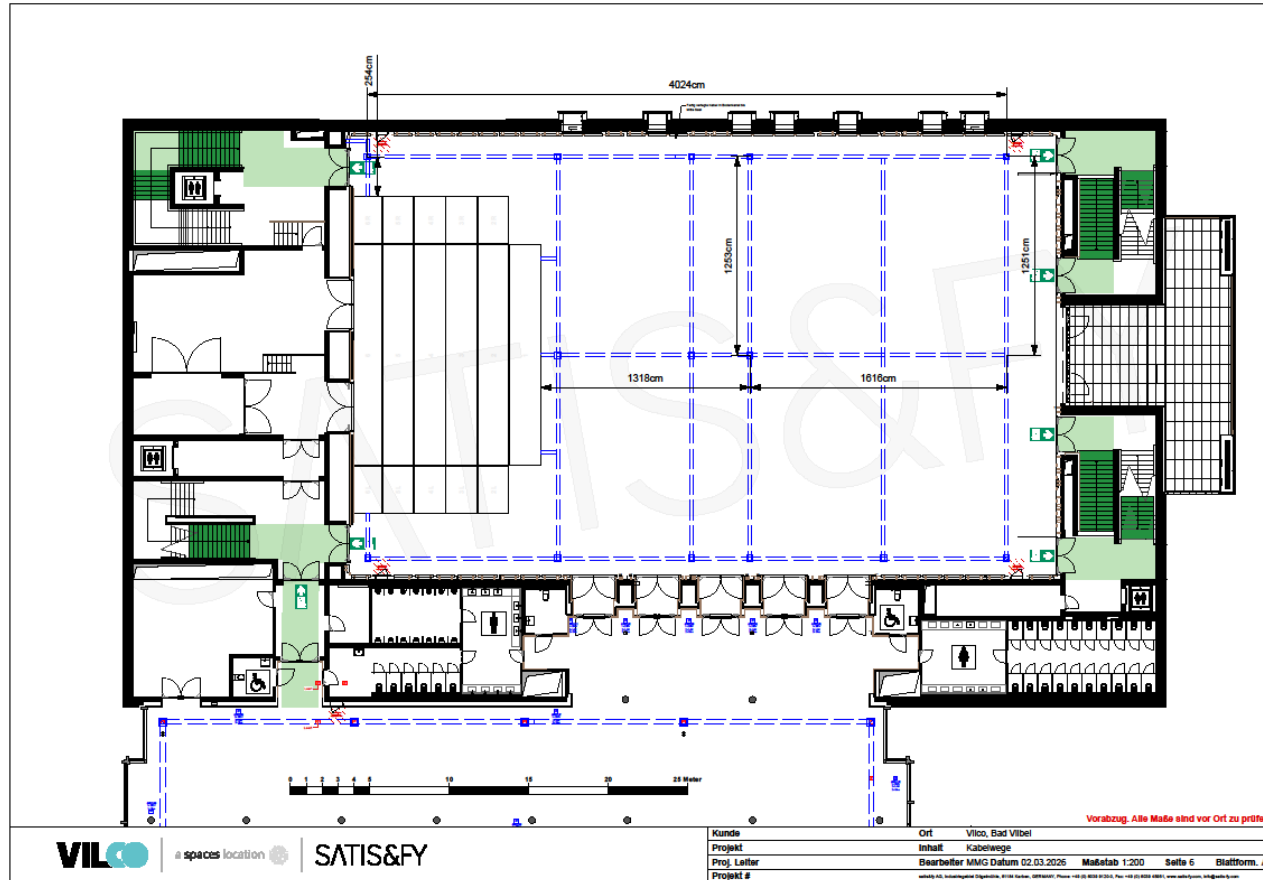


Vorabzug. Alle Maße sind vor Ort zu prüfen!

DOWNLOAD

# VENUE SPECS. GROSSER SAAL. TECHNICAL PLANS

## CABLE ROUTES

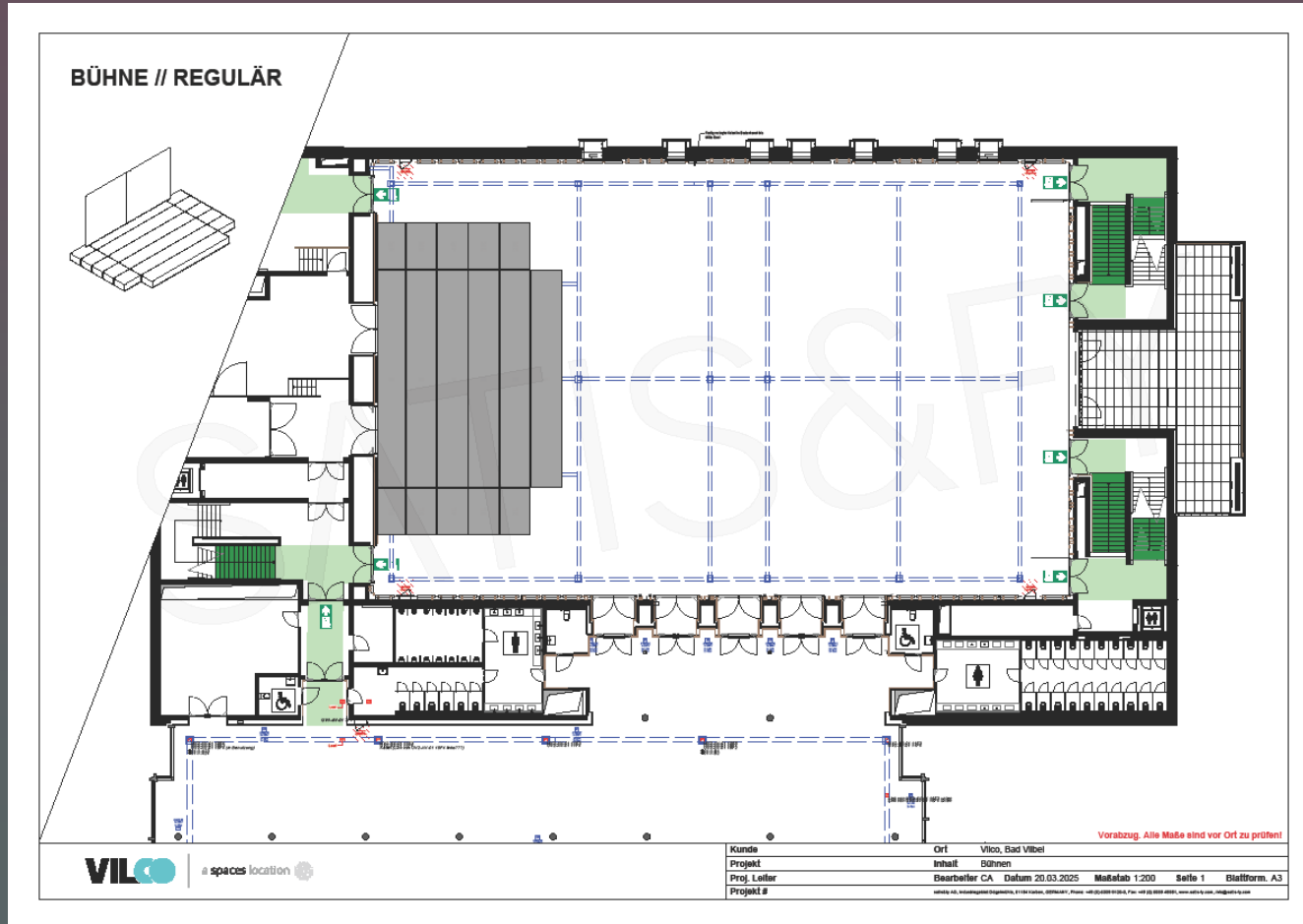


DOWNLOAD



# VENUE SPECS. GROSSER SAAL. TECHNICAL PLANS

## STAGE VARIATIONS

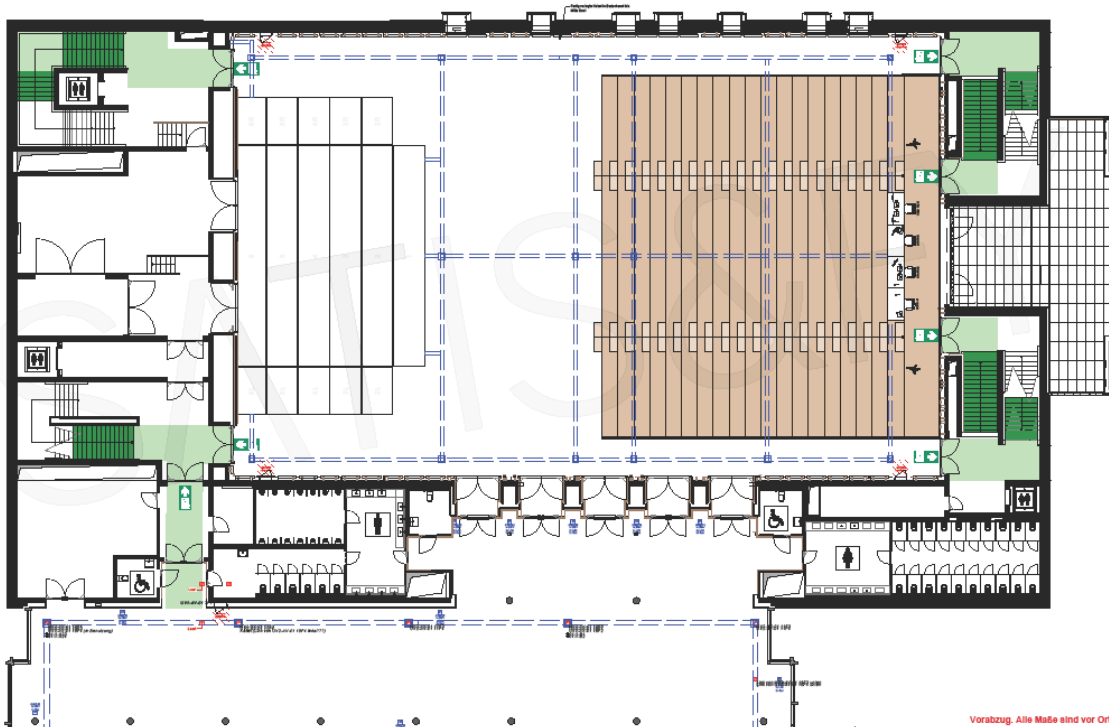


DOWNLOAD

# VENUE SPECS. GROSSER SAAL. TECHNICAL PLANS

## GRANDSTAND VARIATIONS

### GROSSER SAAL MIT TRIBÜNE // KOMPLETT

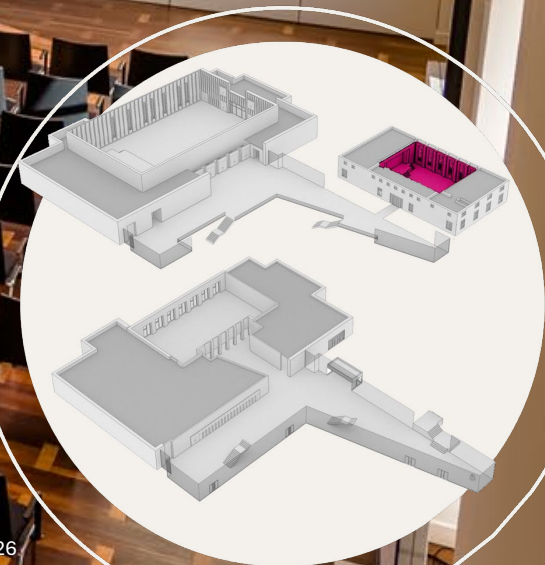


Vorabzug. Alle Maße sind vor Ort zu prüfen!

# VENUE SPECS. KURHAUS.

## ROOM 2 / KURHAUS

Size	370m <sup>2</sup>
Height	6,2 m
Row	344
Parliament	182
Banquet	180
Reception	500

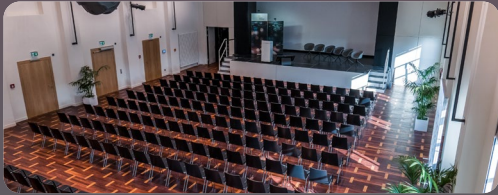


# VENUE SPECS. KURHAUS.



## STAGE

- Permanent stage
- Dimensions: 8 m wide (side portal), 7 m deep, and 0.8 m high
- Access to the artists' dressing rooms



## ROOM SETUP & SEATING

Sufficient quantities of chairs, tables, and bar tables are available for concerts/row seating. Digital seat numbering is available.



## ARTISTS' DRESSING ROOMS

- 4x single rooms and 2x group rooms. Each room is equipped with furniture, mirrors, a refrigerator, showers, and restrooms
- Wi-Fi and LAN are available in all rooms
- A PA system is also available



## VIDEO

- Stage roll-up screen: 8 m wide; height adjustable
- Projector: 13,000-lumen PT-MZ13KLBEJ 3-LCD
- Small video control room



## RIGGING

- The stage has a clear height of approximately 4.5 m and features fixed trusses for mounting equipment, such as lighting
- Auditorium: Clear height 5 m, 5 Eurotruss truss lines with a distributed load of 200 kg



## AUDIO

- L-Acoustics Syva High and Low speakers installed on the right and left sides of the proscenium
- Expansion possible with, e.g., KS 21 subwoofers-
- Mixing console on the gallery: QL1
- Dante network



## LIGHT

- Stage lighting: 11 x Prolight ECL LED profiles at the front, 4 x Prolight LED ECL Fresnel 250 W
- Effect lighting: 8 x moving lights (4 x spot + 4 x wash)
- Mixing console on the gallery: GRAND MA Compact XT



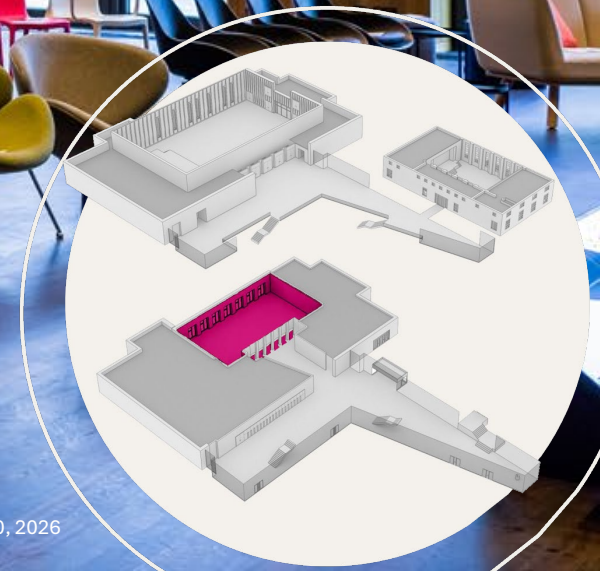
## STROM

- Stage: 1 x CEE 16 A, 1 x CEE 32 A, 2 x Schuko 230 V;
- Auditorium: 2 x Schuko 230 V

# VENUE SPECS. GARTENSAAL.

## ROOM 3 / GARTENSAAL

Size	570 m <sup>2</sup>
Height	4 m
Row	577
Parliament	296
Banquet	264
Reception	1.000



# VENUE SPECS. GARTENSAAL.



## ELECTRICITY

1x CEE 16A in A, 1x CEE 16A in E, various 230V Schuko outlets on the walls



## VIDEO

- Areas A & B each have a 3-panel drop-down screen, 1.6 m high
- 8000 ANSI lumen projector mounted in the ceiling



## AUDIO

Ceiling speakers and a mobile sound system with L-Acoustics SYVA are available.

## NOTE

Thanks to its proximity to the kitchen, production office, and large dressing room for the orchestra, the Garden Hall is often used as a crew catering area during concerts.



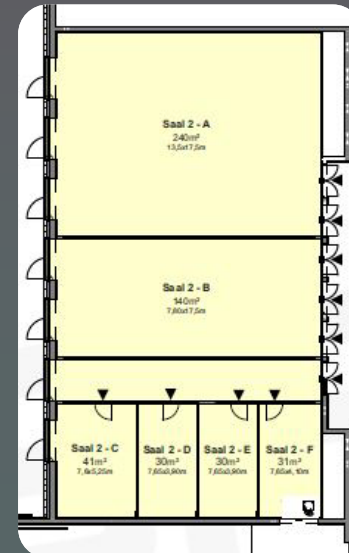
## ROOM SETUP & SEATING

Sufficient chairs, tables, and bar stools are available for concerts and row seating. Digital seat numbering is available.



## LIGHT

Fixed ceiling lights



## PARTITION WALLS

The room can be divided into six rooms using partition walls:

- 2x large rooms (A+B)
- 4x small rooms (C, D, E, and F)

Additional hanging options are available via Airwall mounts and pipes.

# VENUE SPECS. IT-INFRASTRUKTUR & NETZWERKE

## HIGH-SPEED INTERNET

1 Gbps Fiber Optic (Symmetrical)

## SICHERHEIT

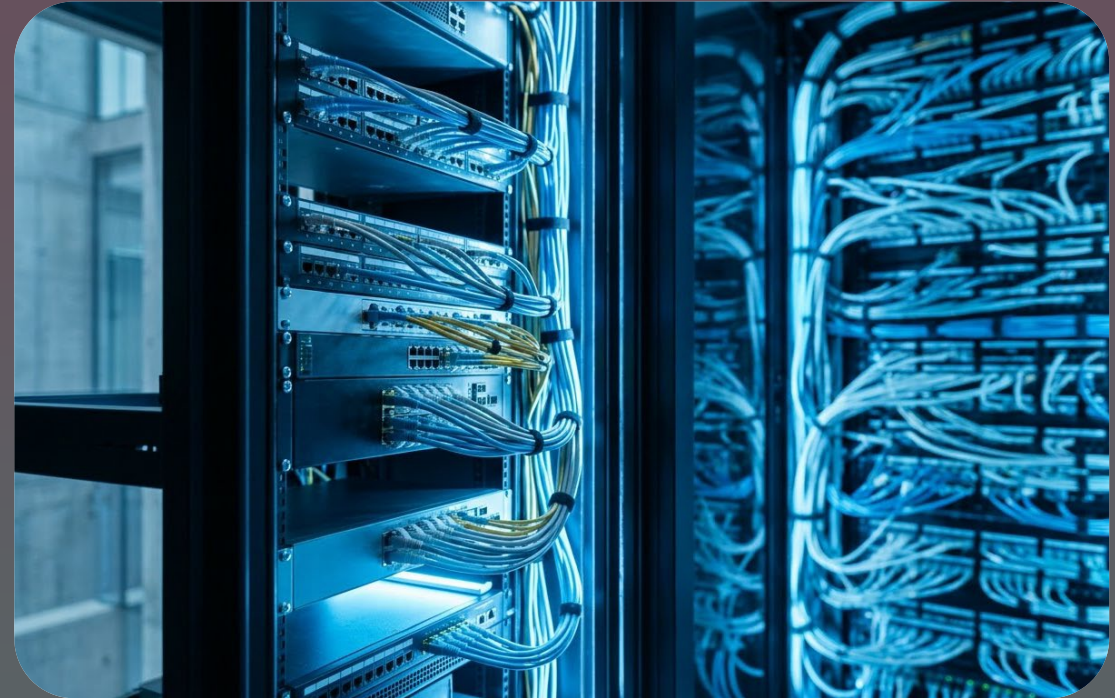
Full hardware-level isolation between event technology and the public internet

## EVENT-PROTOKOLLE

Supports native network solutions, including Dante, Art-Net, MA-Net, and many more

## BARRIEREFREIHEIT

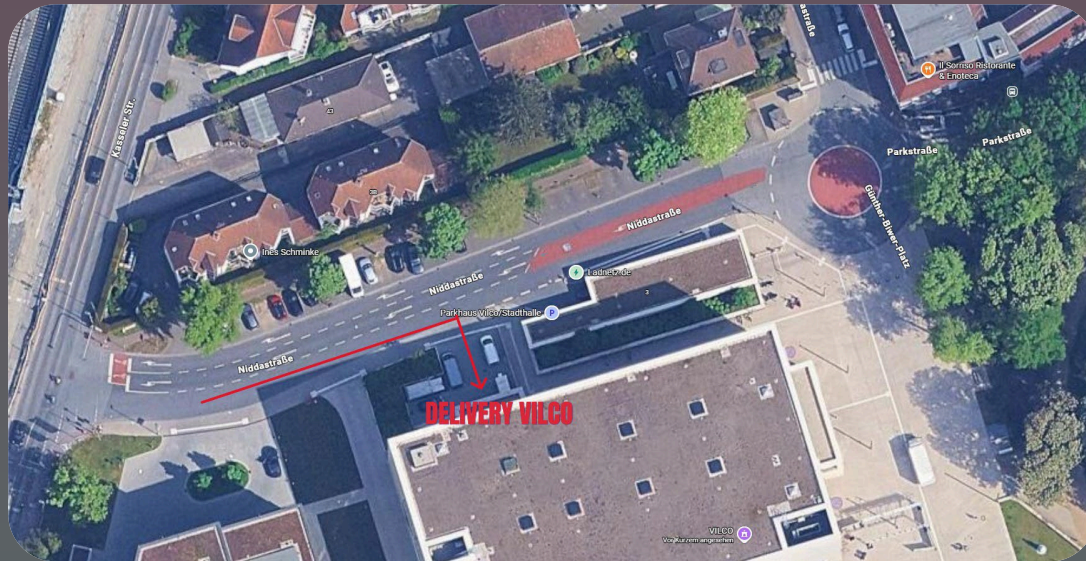
Inductive loop system installed in the main halls



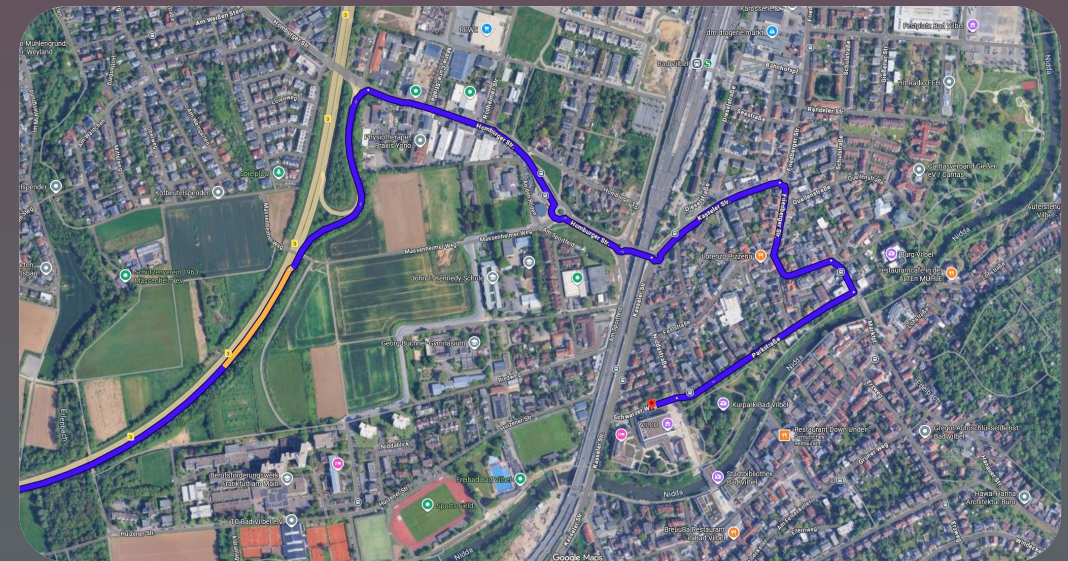
# VENUE SPECS. DELIVERY.

## NIDDASTRASSE 3, 61118 BAD VIBEL

Turn right just before the parking garage entrance.



## DIRECTIONS FROM FRANKFURT TO VILCO



Space for 2 trailers (40 tons) or a nightliner with a trailer; please back in!

Please sign up for the power connection for the nightliner!

**Parking is available for the crew in the underground garage.**

# VENUE SPECS

# VILCO

a spaces location 

## CONTACT

[LocationTeamSales@satis-fy.com](mailto:LocationTeamSales@satis-fy.com)

# SATIS&FY